



## YOU WILL NEED:

### Pegboards:

- 2 large squares
- 1 large circle (optional)

### Other:

- Iron and ironing paper
- Scissors and clear tape
- Tweezers
- Two 14" x 8" pieces of sturdy cardboard
- Masking tape (optional)
- Soda can, slightly larger can for Tiki #4 (optional)
- Rubber bands (optional)
- Hot glue gun (optional)
- Thin brown cord for lacing and a needle (optional)

### Bead Colors:

- Toasted Marshmallow - 121
- Sand - 142
- Fawn - 518
- Tan - 561
- Light Brown - 2489\*
- Brown - 1898\*

\* You will need 3 bags of light brown and 2 bags of brown

## Instructions

You can use your Tiki designs as flat mats or make them into cups/can cozies.

1. Assemble 2 large square pegboards as shown to create your Tiki designs, placing them on one of the large pieces of cardboard on a heat-safe surface that you can later use for fusing. For Tiki #4, you will need to cut out and tape together the pattern sections. Use the large circle pegboard for the bases if you are making cups instead of mats. If you are using clear pegboards, slide the actual-size pattern underneath them. Place your beads following the pattern.

2. **NOTE:** If you make your designs into cups, you should fuse them well on **ONE SIDE ONLY**, which will become the inside of the cup. We recommend that you stop short of fusing the holes closed in case you want to do the lacing finishing described below.

**FUSING:** An adult should fuse the designs—you can use our Standard Fusing Method explained here, or for large projects on multiple pegboards such as this, you might prefer to use the Tape Method for Fusing Large Projects. See below for our standard instructions. For the Tape Method instructions, please visit [www.perler.com](http://www.perler.com).

3. **GLUE FINISHING FOR CUPS:** Use hot glue to close the ends of the Tiki cup design into a circle. Apply glue to the outermost row of beads on the base and press the cup onto it and hold in place until glue is set.
4. **LACING FINISHING FOR CUPS:** Use the needle and thin brown cord to lace up the ends of the Tiki cup working through the bead holes. You can choose to lace the base to the cup, or glue as above.

## Fusing Instructions—Only Adults Iron

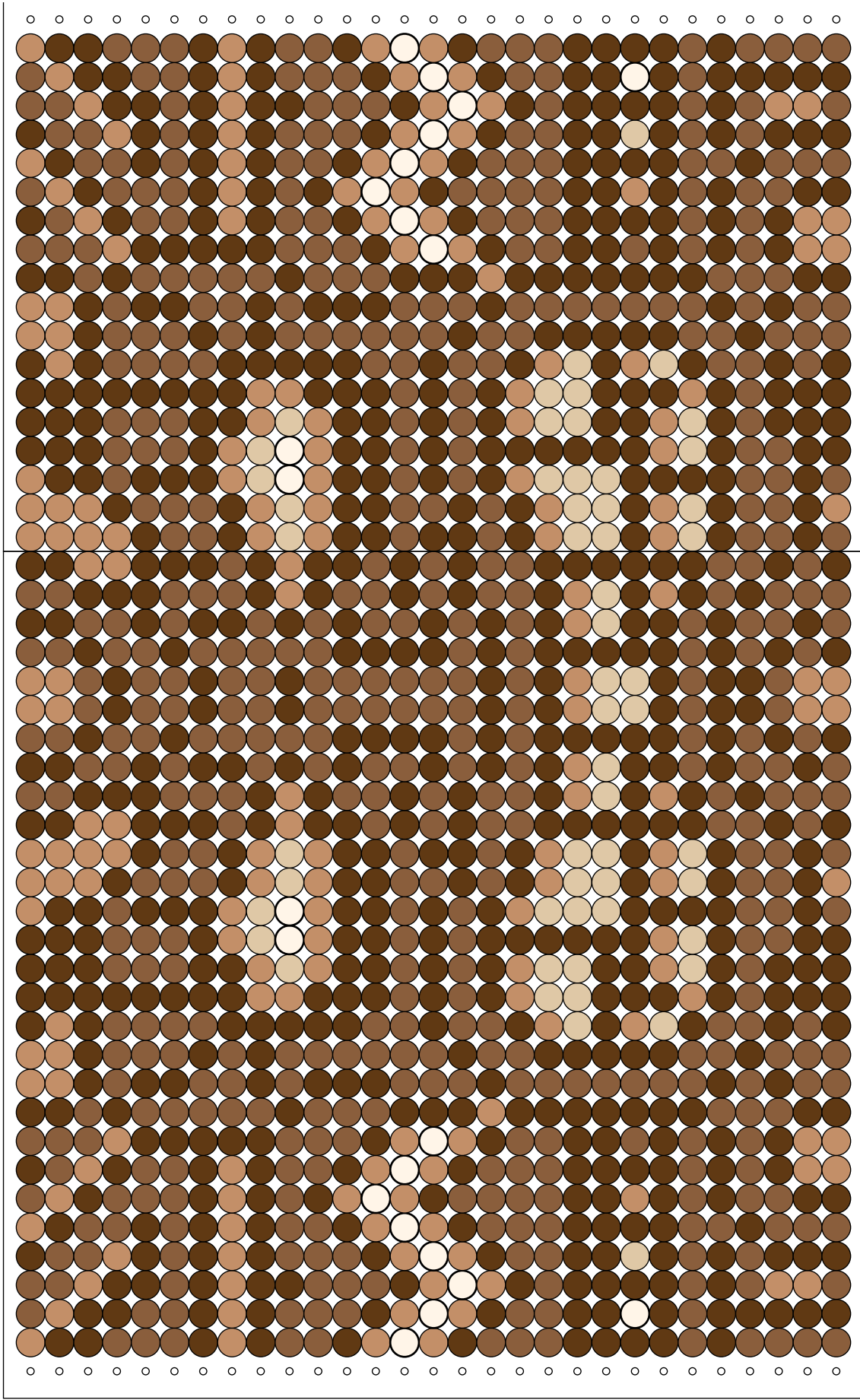


1. Be sure you have placed one of the large cardboard pieces underneath the pegboards.
2. Set a household iron to the medium setting. Place ironing paper over the design. In a circular motion, begin to iron the project. Do not press down with the iron. As the beads begin to fuse, you will see circles of the beads start to show through the paper. Let the design cool. **If you are making your designs into cups**, you can fuse a little longer to make the cup sturdier. When ironed properly, the beads will still have an open center. While the piece is still warm, remove the paper and wrap the design around a soda can (a slightly larger diameter can for Tiki #4), and hold in place with rubber bands until cool.

3. **If you are making your designs into mats**, remove the paper from the bead design. Place the second large piece of cardboard on top so the design is sandwiched between the two cardboard pieces. Flip the design over and remove the pegboards to expose the non-fused side. Repeat the fusing. Let cool completely. When the design is cool, peel off the ironing paper. Your pegboards and ironing paper are reusable.

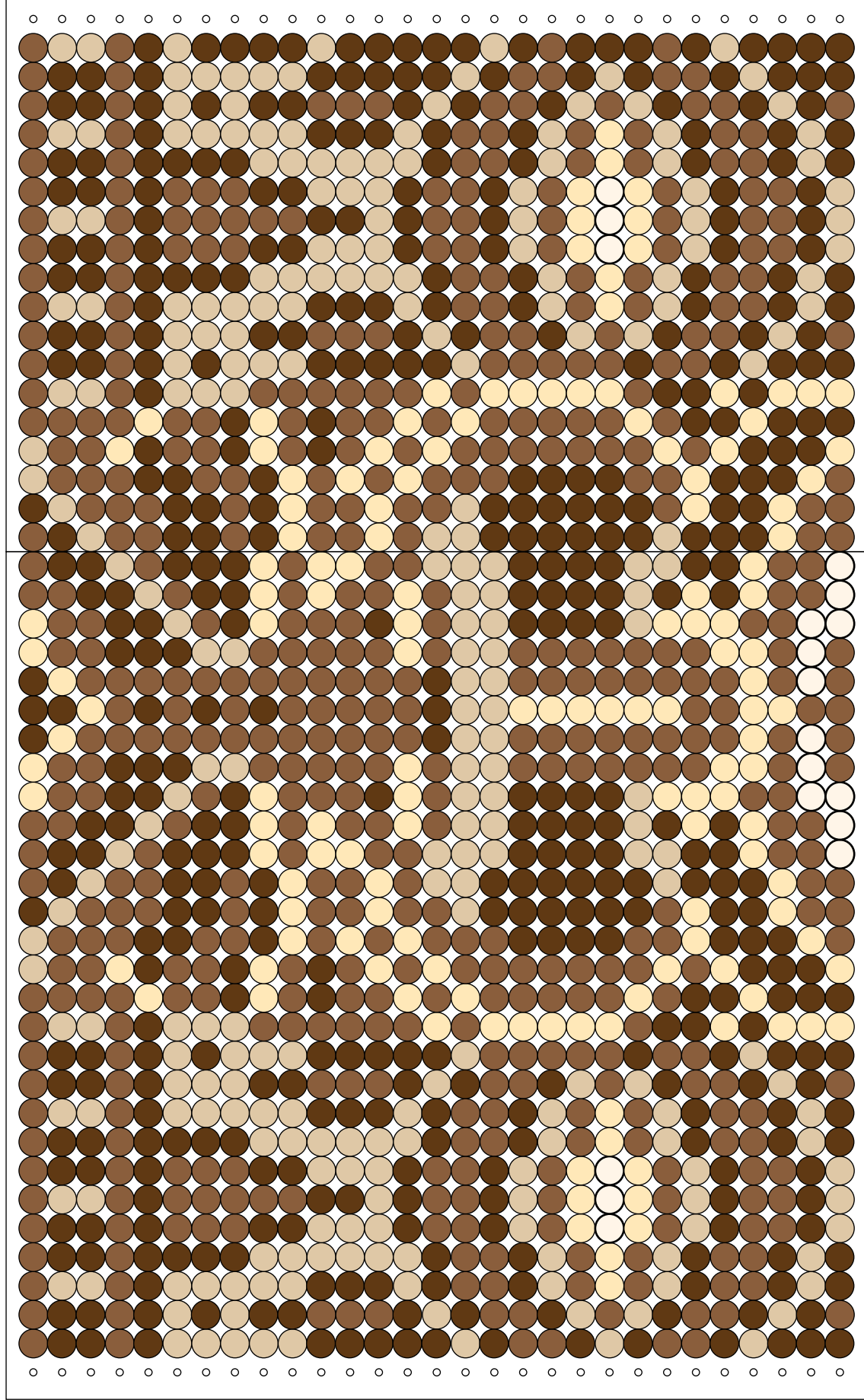
**NOTE:** Beads need heat for about 10-20 seconds per side to fuse evenly. Lift the paper occasionally to see how the beads are fusing. Depending on the size of the project, additional heating time may be required.

Tiki #1



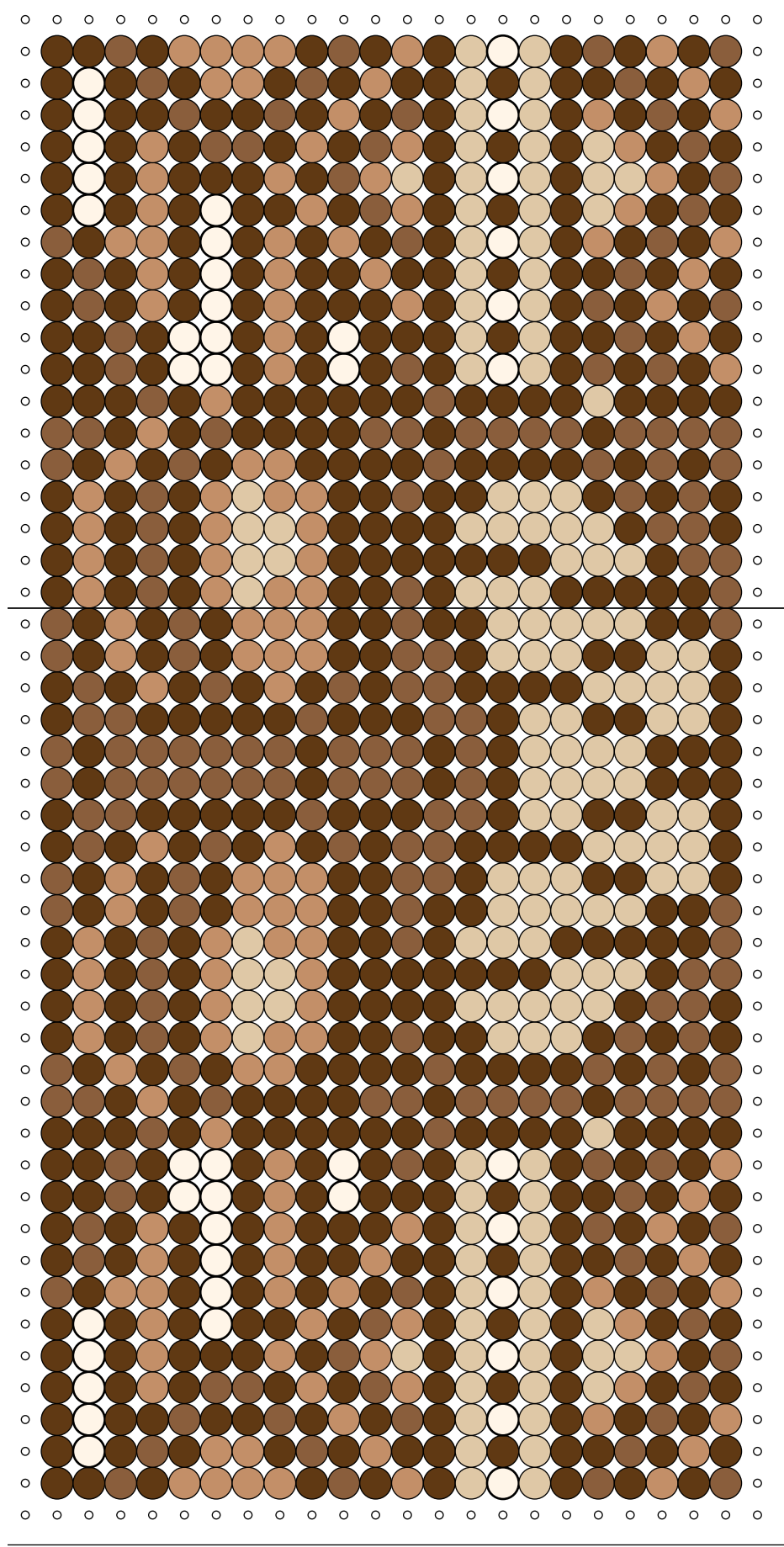
- Bead Colors:**
- Tan
  - Toasted Marshmallow
  - Fawn
  - Light Brown
  - Brown

Tiki #2



- Bead Colors:**
- Toasted Marshmallow
  - Sand
  - Fawn
  - Tan
  - Light Brown
  - Brown

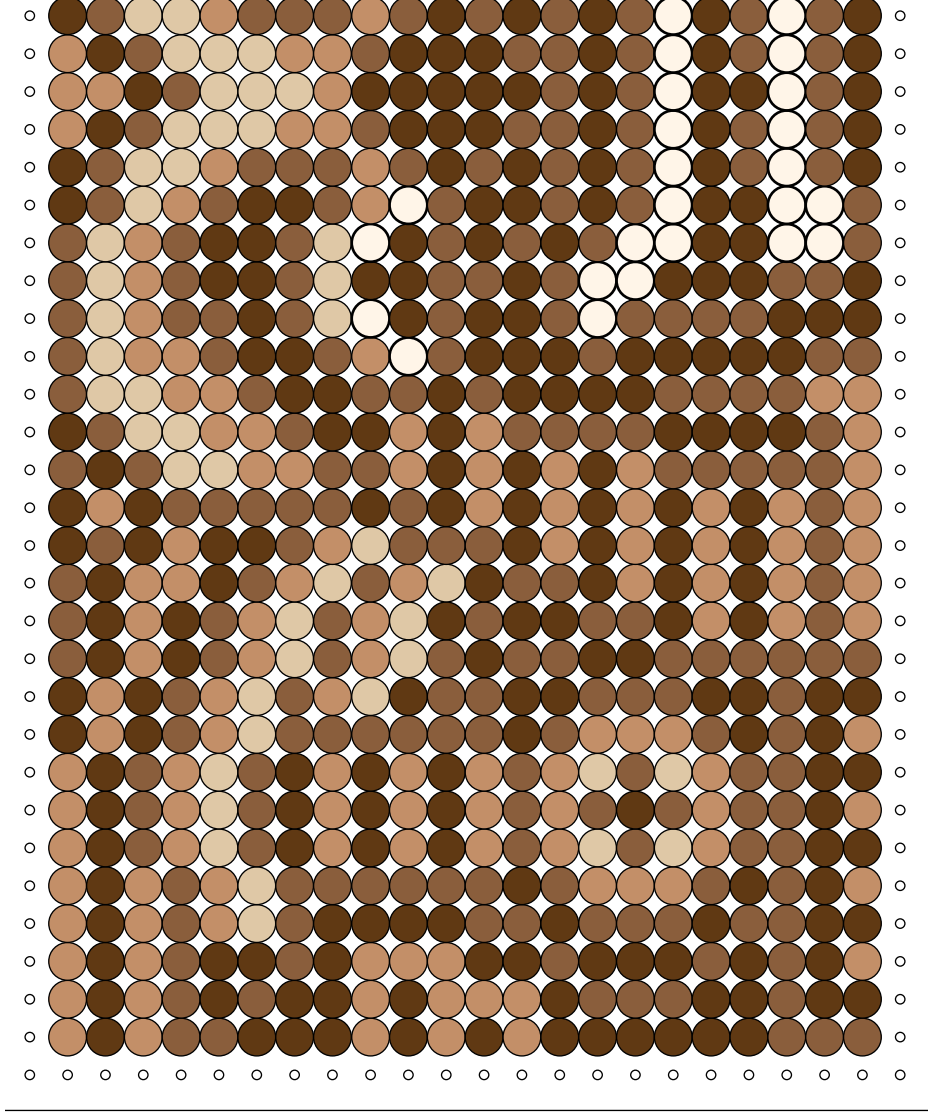
Tiki #3



**Bead Colors:**

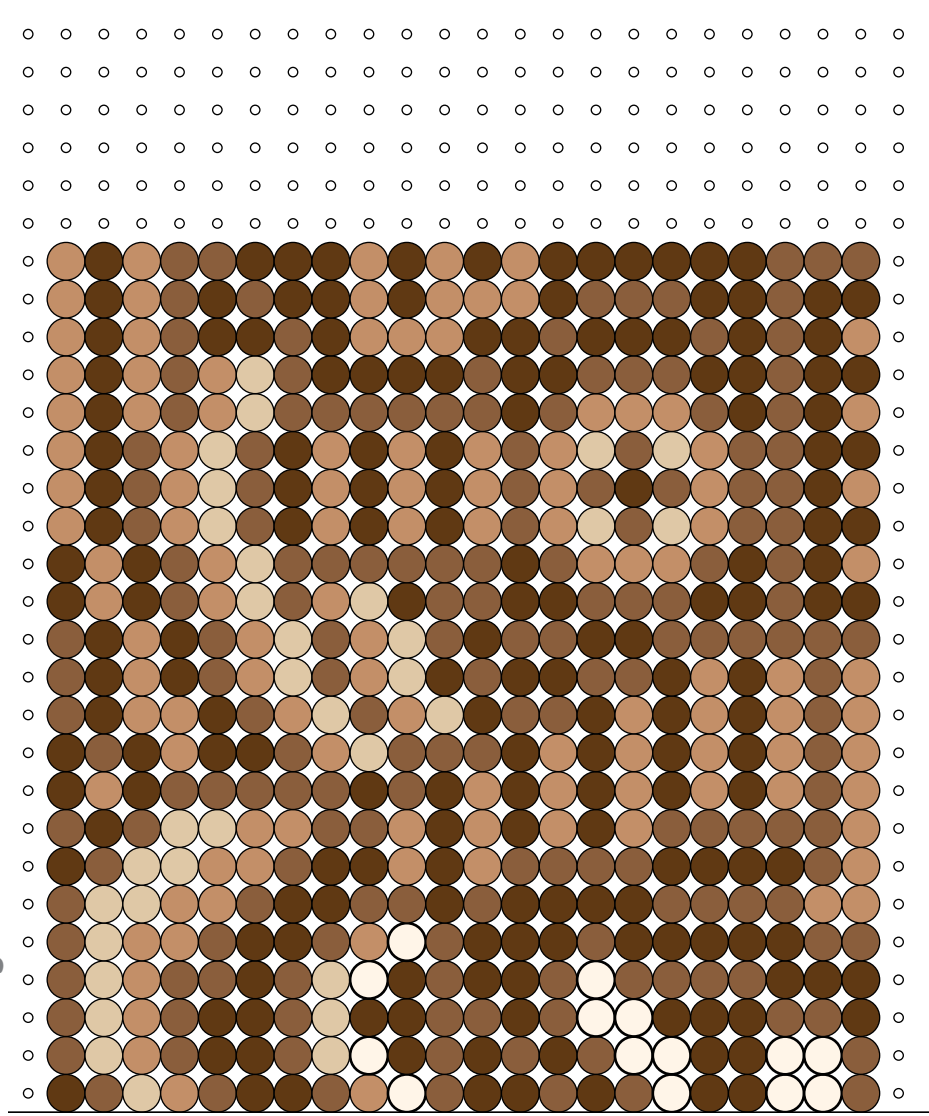
- Toasted Marshmallow
- Fawn
- Tan
- Light Brown
- Brown

Tiki #4: Left Side

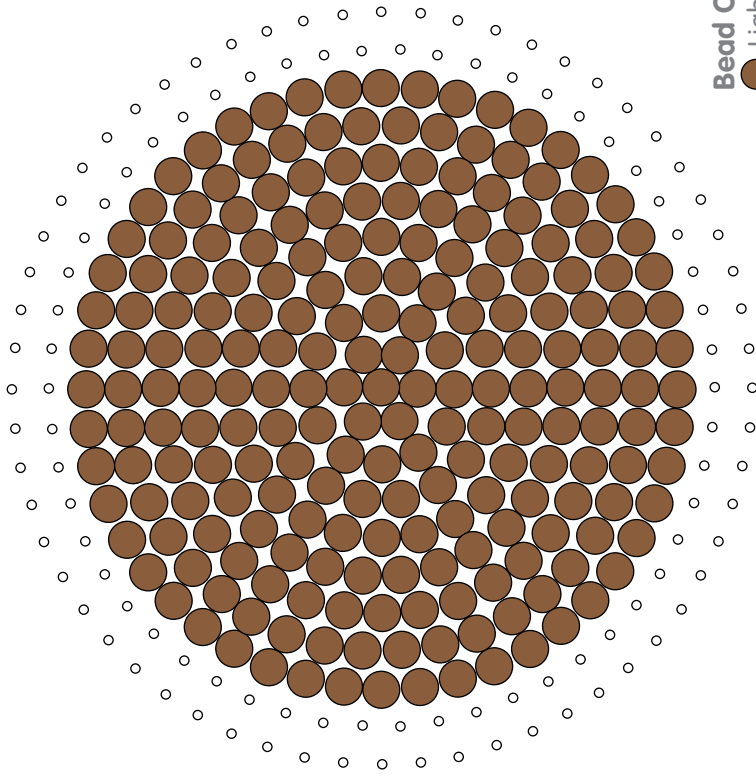


- Bead Colors:**
- Toasted Marshmallow
  - Fawn
  - Tan
  - Light Brown
  - Brown

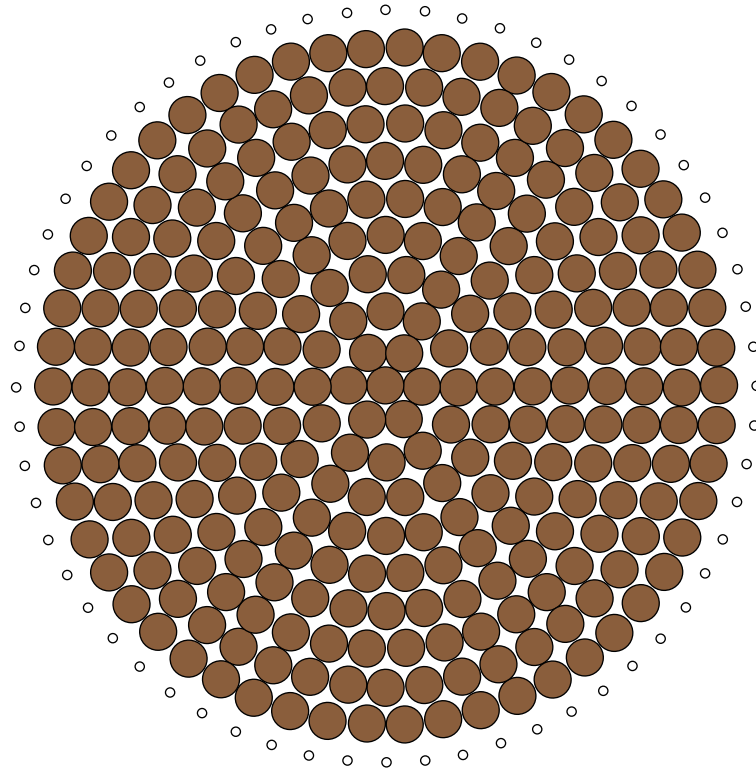
Tiki #4: Right Side



Base for Tiki Cups #1-3



Base for Tiki Cup #4



**Bead Color:**  
● Light Brown